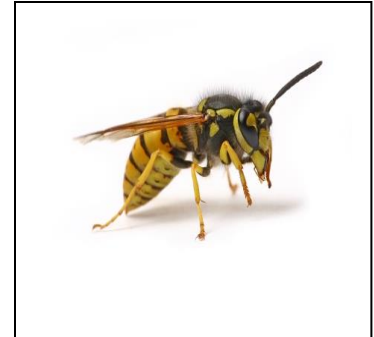


## **Yellow Jacket Wasp**

**Size:** Adult Workers are 3/8 –5/8" long.  
Queens are 3/4" long.

**Description:**

- Colour is yellow and black bands.
- Yellow Jacket Wasps are social wasps serving a queen and are very protective.
- Wings folded longitudinally when at rest.
- Stinger is present.



**Biology and Habits:** This social wasp lives in colonies that begin slowly from the overwintering queen. Once the nest begins to develop and 5 – 7 workers have emerged as adults these workers tend to the queens eggs and pupae cells.

Nests vary from 1000 to 4000 workers at the nest's peak in early fall.

Nest locations vary from trees, shrubs, overhangs and crack – voids of buildings to hollow cavities in ground-soil locations. The workers are very protective of their colony and are capable of multiple stings, inflicting serious pain if you accidentally stumble into a nest.



**Control:** Yellow Jackets are considered beneficial insects because of the significant number of pest insects they capture. So if the nest is not affecting your family's safety, you should consider leaving them alone.

If the nest is too close for comfort, contact us to treat and remove the nest.

There are a number of products and techniques we utilize to treat the nests of these aggressive wasps. Every nest is slightly different in size, location, access etc. Some can be physically removed immediately after the treatment. Other nests that are inside voids can be treated and eliminated. But the nest colony can't be removed from the interior void.

Protective clothing should be worn if you decide to treat and remove the nest yourself.

***BEST SOLUTION CALL The Spidermen !!!***